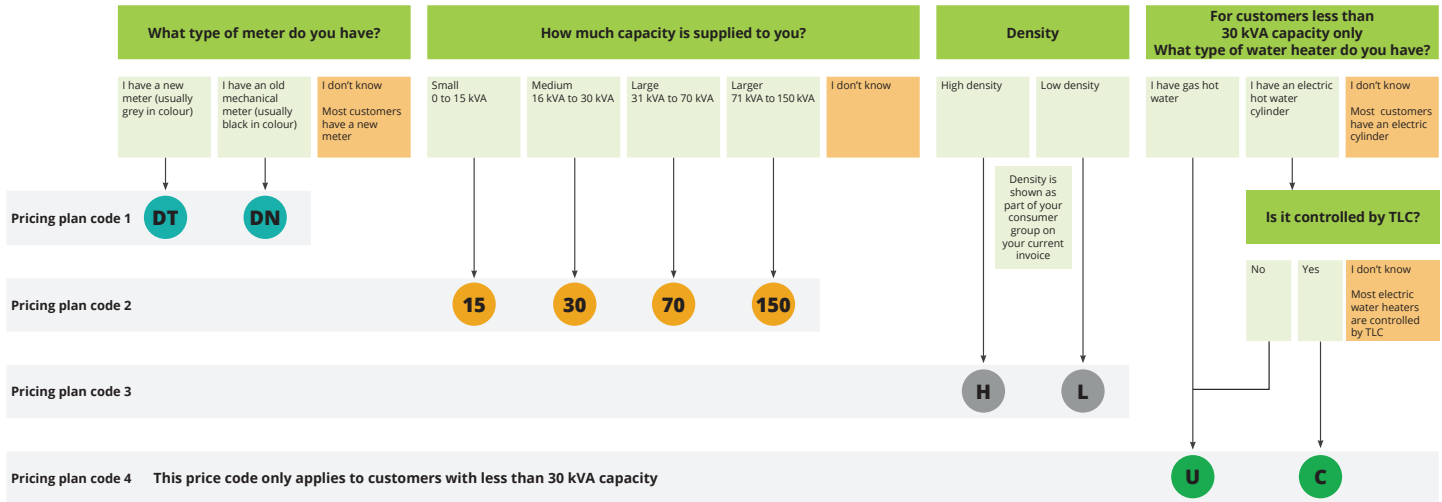


How to work out your pricing plan code - For Dairy Customers.



What to do if you don't know the answers to these questions

Check your letter

All customers with new prices will be sent a letter before 1 October 2018, detailing the code(s) and prices that apply to your connection point(s).

Or

Contact us

Call or email our team on 0800 367 546 or info@thelines.co.nz. We'll be able to check your account and advise you of your price code.

Metering fee prices

Price codes starting with DT have the following meter prices:

M1T if you have a single-phase meter

Or

M3T if you have a 3-phase meter.

Price codes starting with DN leads to MN meter price.

| Pricing plan code | | | | Dairy Time of Use (TOU) | | | Fixed Prices | | Variable Prices | | | | | | |
|-------------------|-----|---|-----|-------------------------|---------|--------------|--------------------|------------------------------|-------------------|--------------------------|-----------------------|--------------------------|--------------------------|--------------------------|--------------------------|
| 1 | 2 | 3 | 4 | 0-15 kVA | density | load | distribution price | distribution price after ppd | Peak (\$ per kWh) | Shoulder (\$ per kWh) | Off Peak (\$ per kWh) | delivery price | delivery price after ppd | delivery price | delivery price after ppd |
| DT | 15 | H | C | DT-15-HC | High | Controlled | 1.2713 | 1.1442 | 0.1356 | 0.1220 | 0.1267 | 0.1140 | 0.0722 | 0.0650 | |
| DT | 15 | L | C | DT-15-LC | Low | | 1.8137 | 1.6323 | | | | | | | |
| DT | 15 | H | U | DT-15-HU | High | Uncontrolled | 1.2713 | 1.1442 | 0.1911 | 0.1720 | 0.1267 | 0.1140 | 0.0722 | 0.0650 | |
| DT | 15 | L | U | DT-15-LU | Low | | 1.8137 | 1.6323 | | | | | | | |
| 1 | 2 | 3 | 4 | 16-30 kVA | density | load | distribution price | distribution price after ppd | delivery price | delivery price after ppd | delivery price | delivery price after ppd | delivery price | delivery price after ppd | |
| DT | 30 | H | C | DT-30-HC | High | Controlled | 2.5849 | 2.3264 | 0.1500 | 0.1350 | 0.1122 | 0.1010 | 0.0611 | 0.0550 | |
| DT | 30 | L | C | DT-30-LC | Low | | 3.3900 | 3.0510 | | | | | | | |
| DT | 30 | H | U | DT-30-HU | High | Uncontrolled | 2.5849 | 2.3264 | 0.1689 | 0.1520 | 0.1122 | 0.1010 | 0.0611 | 0.0550 | |
| DT | 30 | L | U | DT-30-LU | Low | | 3.3900 | 3.0510 | | | | | | | |
| 1 | 2 | 3 | 4 | 31-70 kVA | density | load | distribution price | distribution price after ppd | delivery price | delivery price after ppd | delivery price | delivery price after ppd | delivery price | delivery price after ppd | |
| DT | 70 | H | n/a | DT-70-H | High | n/a | 5.7208 | 5.1487 | 0.1389 | 0.1250 | 0.1011 | 0.0910 | 0.0611 | 0.0550 | |
| DT | 70 | L | n/a | DT-70-L | Low | | 7.6277 | 6.8649 | | | | | | | |
| 1 | 2 | 3 | 4 | 71-150 kVA | density | load | distribution price | distribution price after ppd | delivery price | delivery price after ppd | delivery price | delivery price after ppd | delivery price | delivery price after ppd | |
| DT | 150 | H | n/a | DT-150-H | High | n/a | 11.9501 | 10.7551 | 0.1233 | 0.1110 | 0.0900 | 0.0810 | 0.0611 | 0.0550 | |
| DT | 150 | L | n/a | DT-150-L | Low | | 15.6792 | 14.1113 | | | | | | | |

| Pricing plan code | | | | Dairy Non Time of Use (NTOU) | | | Fixed Prices | | Variable Prices | | |
|-------------------|-----|---|-----|------------------------------|---------|--------------|--------------------|------------------------------|----------------------|--------------------------|--------------------------|
| 1 | 2 | 3 | 4 | 0-15 kVA | density | load | distribution price | distribution price after ppd | Anytime (\$ per kWh) | delivery price | delivery price after ppd |
| DN | 15 | H | C | DN-15-HC | High | Controlled | 1.2713 | 1.1442 | 0.1227 | 0.1104 | |
| DN | 15 | L | C | DN-15-LC | Low | | 1.8137 | 1.6323 | | | |
| DN | 15 | H | U | DN-15-HU | High | Uncontrolled | 1.2713 | 1.1442 | 0.1430 | 0.1287 | |
| DN | 15 | L | U | DN-15-LU | Low | | 1.8137 | 1.6323 | | | |
| 1 | 2 | 3 | 4 | 16-30 kVA | density | load | distribution price | distribution price after ppd | delivery price | delivery price after ppd | |
| DN | 30 | H | C | DN-30-HC | High | Controlled | 2.5849 | 2.3264 | 0.1186 | 0.1067 | |
| DN | 30 | L | C | DN-30-LC | Low | | 3.3900 | 3.0510 | | | |
| DN | 30 | H | U | DN-30-HU | High | Uncontrolled | 2.5849 | 2.3264 | 0.1254 | 0.1129 | |
| DN | 30 | L | U | DN-30-LU | Low | | 3.3900 | 3.0510 | | | |
| 1 | 2 | 3 | 4 | 31-70 kVA | density | load | distribution price | distribution price after ppd | delivery price | delivery price after ppd | |
| DN | 70 | H | n/a | DN-70-H | High | n/a | 5.7208 | 5.1487 | 0.1104 | 0.0994 | |
| DN | 70 | L | n/a | DN-70-L | Low | | 7.6277 | 6.8649 | | | |
| 1 | 2 | 3 | 4 | 71-150 kVA | density | load | distribution price | distribution price after ppd | delivery price | delivery price after ppd | |
| DN | 150 | H | n/a | DN-150-H | High | n/a | 11.9501 | 10.7551 | 0.1007 | 0.0906 | |
| DN | 150 | L | n/a | DN-150-L | Low | | 15.6792 | 14.1113 | | | |

Note: ppd refers to prompt payment discount

Metering fee prices

| price code | meter type | phase | Daily (\$ per day) | |
|------------|-----------------|-------|--------------------|-----------|
| | | | price | after ppd |
| M1T | Time of Use | 1 | 0.2667 | 0.2400 |
| M3T | | 3 | 0.3556 | 0.3200 |
| MN | Non Time of Use | n/a | 0.2667 | 0.2400 |

Disclaimer

This guide will help you to work out your pricing plan code. It is a guide only and may differ from your actual pricing plan code depending on individual circumstances.

For further information please refer to the pricing schedule on our website thelinescompany.co.nz from 31 August 2018.

All customers with new prices will be sent a letter before 1 October 2018, detailing the code(s) and prices that apply to your connection point(s).

If you have any questions please call 0800 367 546 or email our team info@thelines.co.nz