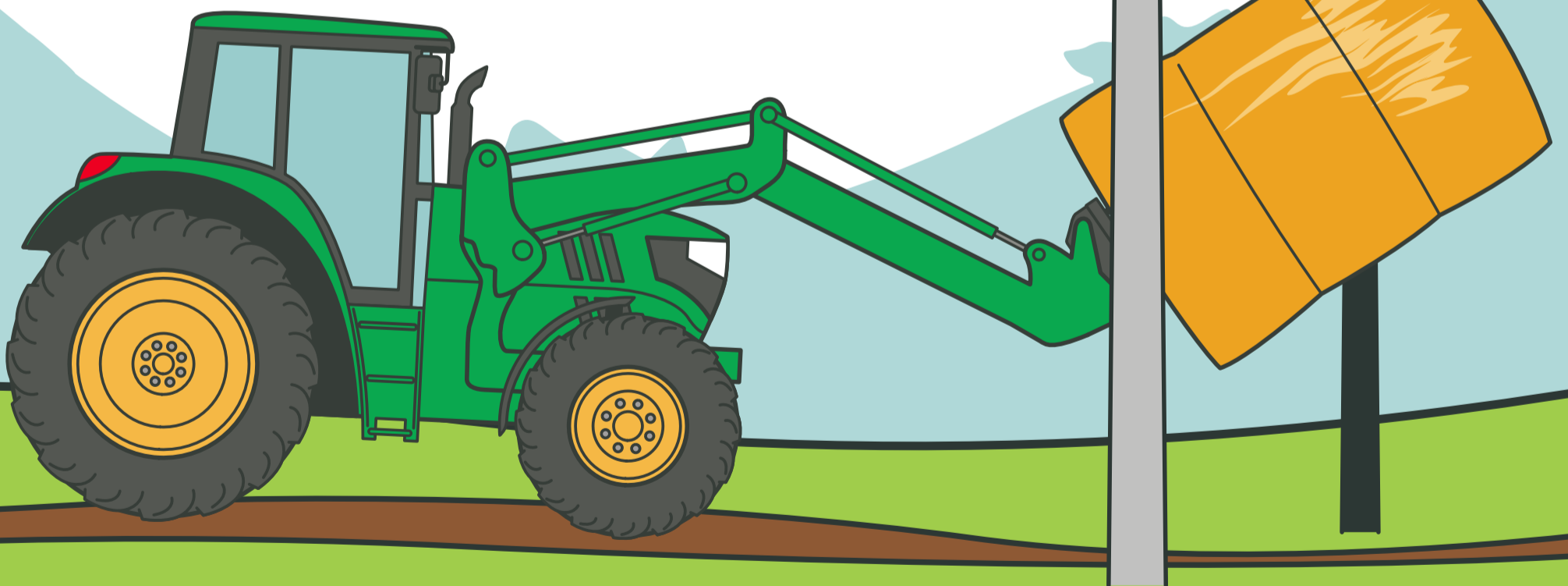




Don't cut
it too close

**Look up and give
power lines at least
4m of space**



Stay switched on, stay safe around electricity
Got a question? Give us a call on 0800 367 546



Before you dig

**check for
underground
gas, power and
water services**



Check out
**beforeudig
.co.nz**

Stay switched on, stay safe around electricity
Got a question? Give us a call on 0800 367 546



Treat lines
as live at
all times

**Do not go near
power lines
that have been
brought down**



Stay switched on, stay safe around electricity
Got a question? Give us a call on 0800 367 546

Keep pillar boxes clear

**Make sure they
are visible at all
times to avoid
damage**

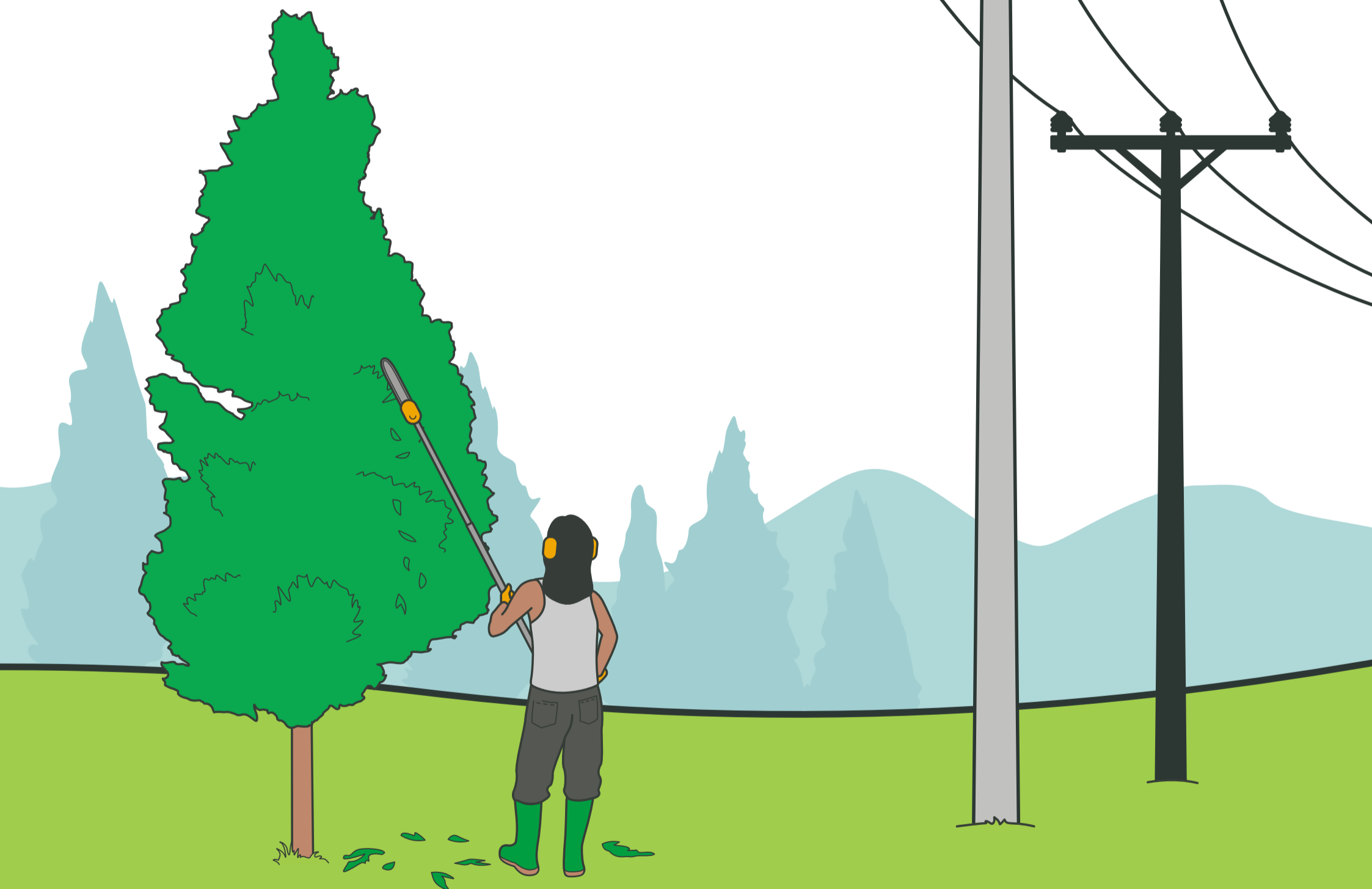


Stay switched on, stay safe around electricity
Got a question? Give us a call on 0800 367 546



Keep trees trimmed

before they grow too close to lines

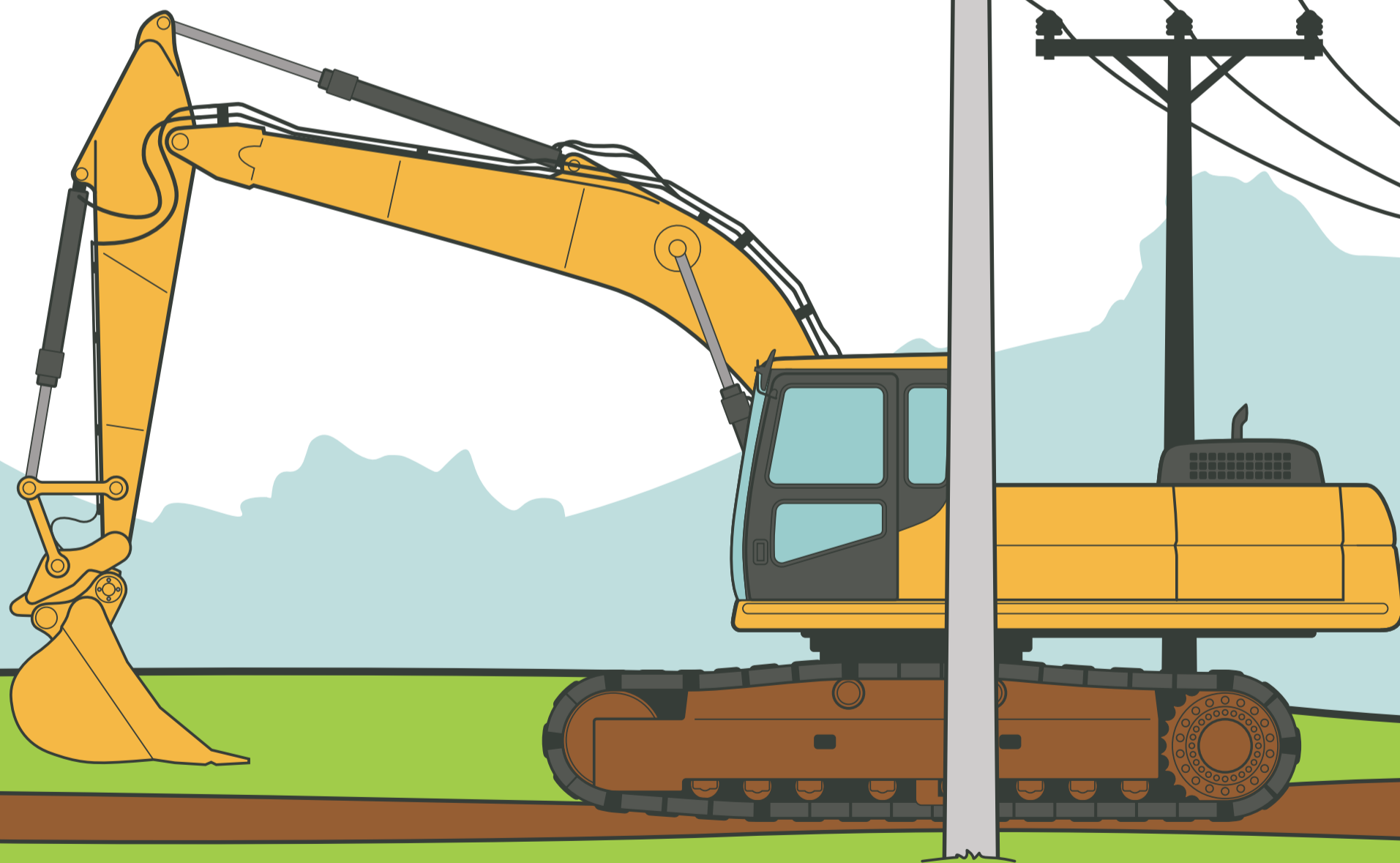


Stay switched on, stay safe around electricity
Got a question? Give us a call on 0800 367 546



Stay inside, stay safe

**If you have an
accident with a
power line, call
us immediately**



**Stay switched on, stay safe around electricity
Got a question? Give us a call on 0800 367 546**