

Trees must be kept clear of power lines

Trees close to power lines can be a danger to the public and can cause interruptions to our power supply, especially during high winds and storms. Branches that come into contact with lines can produce power outages and fires. If the line breaks, the fallen line can possibly electrocute people or livestock. Serious injury and even death can occur if a person comes into contact with power lines while climbing or pruning trees near the lines. For all these reasons, trees need to be kept clear of power lines.

Regulations to keep people and lines safe

The Electricity (Hazards from Trees) Regulations 2003 were introduced to keep trees a safe distance from power lines. The following information provides an overview of how the regulations work and what they mean for you.

Specific information will be provided to tree owners prior to us undertaking any work under the regulations.

First trim under the Regulations

Trees inside the growth limit zone must be trimmed. In certain situations, the first cut or trim of trees in the growth limit zone will be undertaken and paid for by us. We will be contacting owners of trees requiring a cut or trim as part of our network wide tree trimming program.

We only provide a free first trim to the tree itself and there is no requirement for us to provide another trim if the property now has a new owner.

Please check with us if you are not sure if your tree has ever had its first free trim.

Complaints

It is our aim to resolve any land or tree complaints or problems that may arise as quickly and effectively as possible.

Should you have any concerns that you would like to discuss further with us, please contact our Customer Team on 0800 367 546.

If there is an outstanding issue which you believe was not handled in the best way possible by The Lines Company you can contact Utilities Disputes which is a free and independent service for resolving complaints about utilities providers.

EGCC Contact Details

Freephone: 0800 22 33 40

Fax: 0800 22 33 47

Email: info@utilitiesdisputes.co.nz

utilitiesdisputes.co.nz



Keep lines clear for power and safety

0800 367 546

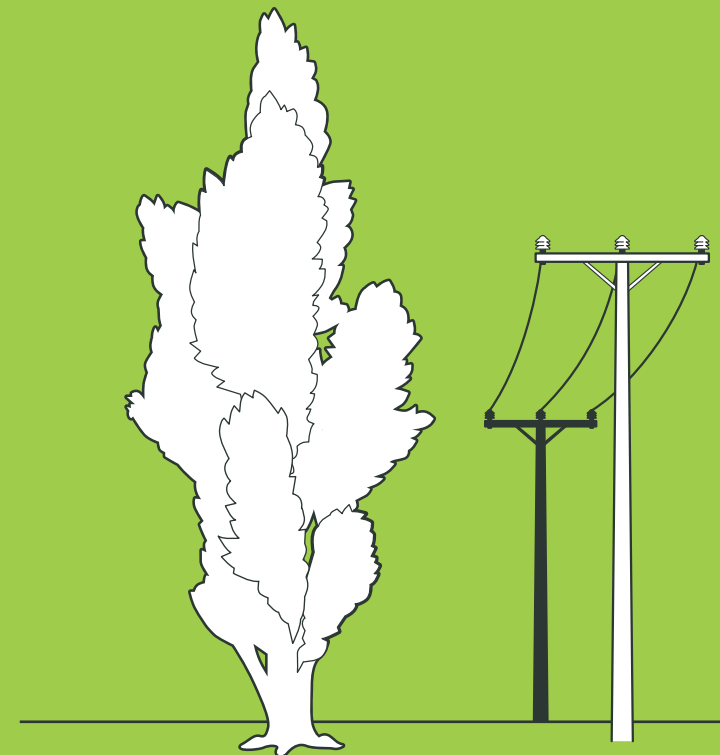
thelinescompany.co.nz

This information is provided under the Electricity (Hazards from Trees) Regulations 2003



Tree Safety

Let's work together



Growth limit zones

Trees must be kept the following distances from any line conductor

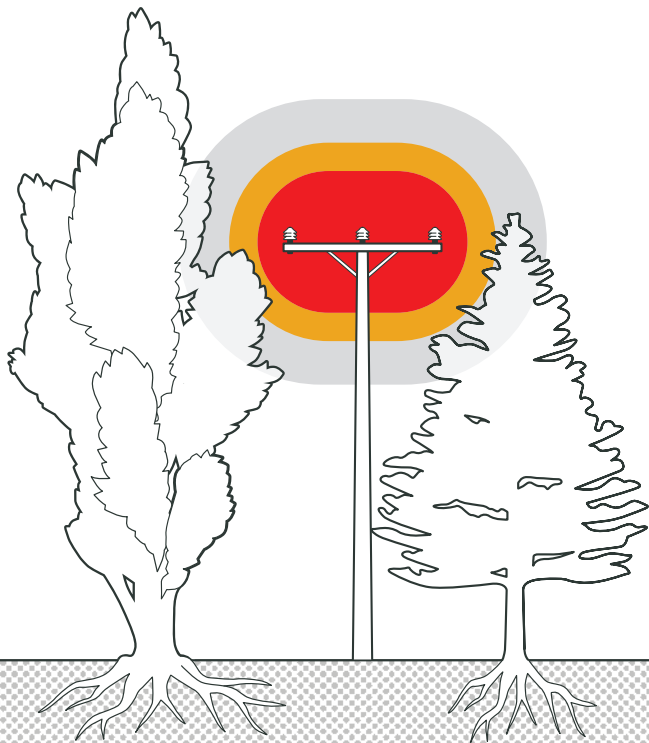
ZONES FOR NETWORK LINES

Overhead Line Voltage	Growth Limit Zone	Notice Zone	Professional Only Zone
33kV	2.5m	3.5m	4.0m
11kV	1.6m	2.6m	4.0m
230-400V	0.5m	1.5m	4.0m

If a tree is within the below distance it must be trimmed back to the Notice Zone, which is 1 metre beyond the growth limit zone. Please contact us if in doubt.

The distances apply to power lines with spans between poles up to 150 metres. Additional clearances apply for spans greater than 150 metres.

Professional Only Zone Notice Zone Growth Limit Zone



Owner's responsibility

The tree owner is always responsible for keeping their trees outside the growth limit zone.

However, in some cases (normally where the tree is self grown), you can declare 'no interest' in the tree and we will take responsibility for keeping the tree clear. In such instances we will probably opt to fell the tree to save further maintenance costs.

Hazard notice

To prevent trees growing too close to power lines, we may issue a hazard warning notice to a tree owner if a tree is encroaching the notice zone.

Cut or trim notice

We will issue a Cut or Trim Notice to the tree owner if we become aware that a tree is encroaching the growth limit zone, and we require the tree owner to trim the tree.

Action required

A Cut or Trim Notice will detail the action the tree owner must take. This will include contact details for approved contractors, time limits and the need to advise us before the tree is cut or trimmed.

We may need to disconnect power around the tree if live line trimming is not possible, or take other steps to protect the supply of power and ensure safety.



Penalties for not complying

Failing to comply with the requirements of a Cut or Trim Notice is an offence.

It is also an offence to fail to advise us in advance of when the work on the tree will be undertaken and its location. Tree owners can be fined up to \$10,000 for these offences, plus up to \$500 a day for a continuing offence. They can also be liable for the damage caused if a tree damages a power line.

Pre-existing agreements

Any existing agreements with The Lines Company regarding the management of your trees, and the associated costs, will continue to be in effect. This includes agreements relating to work scheduled but not commenced.

Safety matters

The tree owner is responsible for keeping their trees away from lines. However, for safety reasons, only qualified tree trimmers should trim any tree near power lines. Serious injury or death can occur if a person, or the equipment being used by a person, comes into contact with electricity lines. For safety's sake, you must use a qualified professional.

Common law

The Electricity Hazards Regulations only apply to trees within the Notice Zone. The Lines Company reserves its ability to seek compensation from any tree owner who has a tree outside this zone that falls onto our lines and causes damage.